

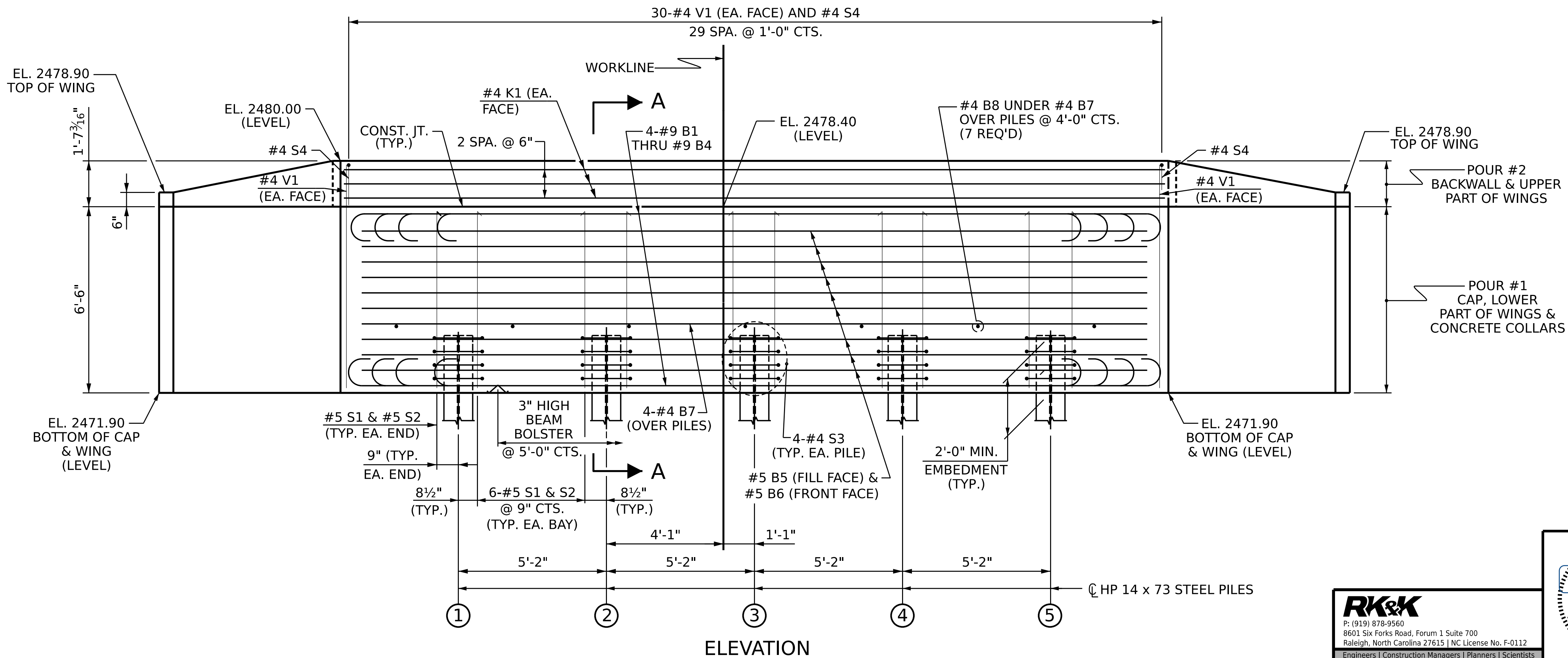
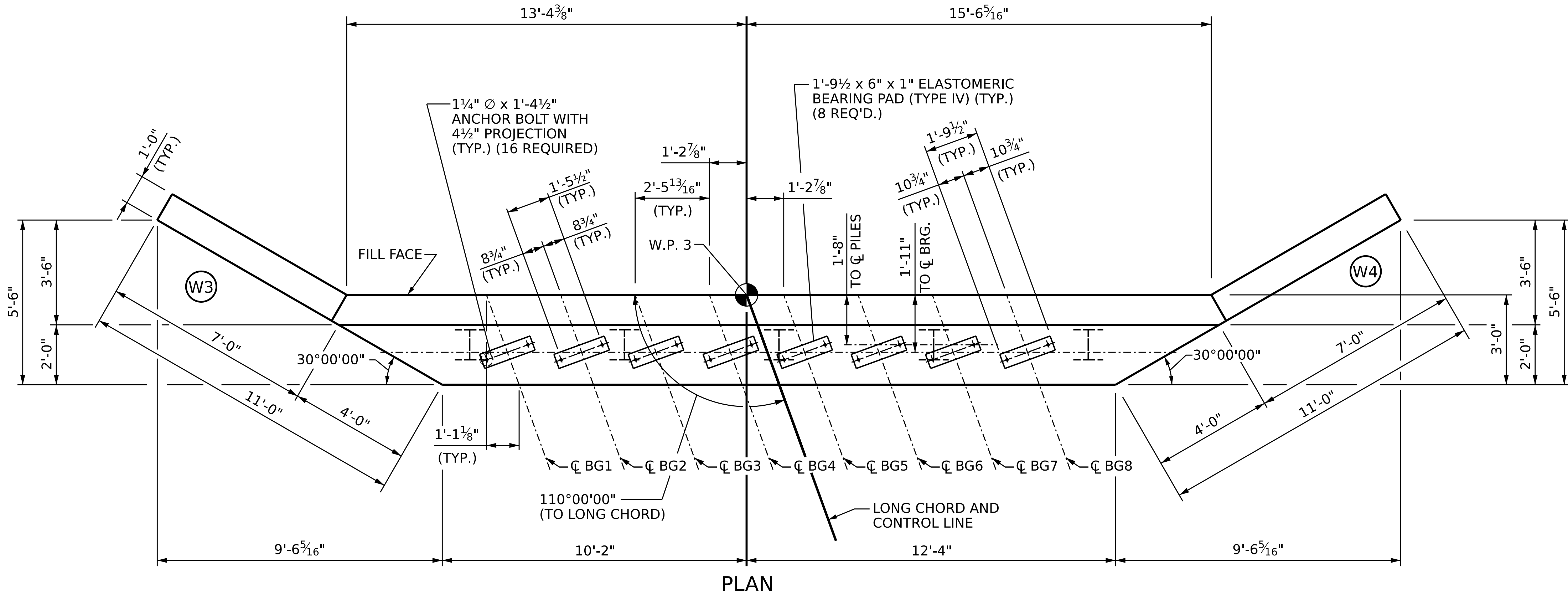
NOTES

STIRRUPS IN CAP MAY BE SHIFTED AS NECESSARY TO ANCHOR BOLTS.

FOR PILE SPLICE DETAILS, SEE SHEET 3 OF 3.

FOR WING DETAILS, SEE SHEET 2 OF 3.

FOR SECTION A-A, SEE SHEET 3 OF 3.



CONCRETE COLLARS FOR STEEL PILES NOT SHOWN IN PLAN AND ELEVATION VIEWS FOR CLARITY
SEE "CORROSION PROTECTION FOR STEEL PILES DETAIL", SHEET 3 OF 3.

PROJECT NO.: 18314.1044073

HAYWOOD COUNTY

STATION: 12+13.00 -L-

SHEET 1 OF 3

STATE OF NORTH CAROLINA
DEPARTMENT OF TRANSPORTATION
RALEIGH

SUBSTRUCTURE END BENT 2 PLAN AND ELEVATION

REVISIONS						SHEET NO. S-18
NO.	BY:	DATE:	NO.	BY:	DATE:	
1			3			TOTAL SHEETS 21
2			4			

DRAWN BY : B. H. GONFA DATE : JUL 2025
 CHECKED BY : B. D. KLAPPENBACH DATE : JUL 2025
 DESIGN ENGINEER OF RECORD: B. D. KLAPPENBACH DATE : JUL 2025

RK&K
P: (919) 878-9560
8601 Six Forks Road, Forum 1 Suite 700
Raleigh, North Carolina 27615 | NC License No. F-0112
Engineers | Construction Managers | Planners | Scientists
www.rkk.com

Professional Engineer Seal for Bruce D. Klappenbach, State of North Carolina, License No. 19118A2550, Expires 12/15/2025.

DOCUMENT NOT CONSIDERED FINAL
UNLESS ALL SIGNATURES COMPLETED